

ProfileVision by Profile Solutions

Precision Vision Inspection for the Plastics Industry

ProfileVision™ is a machine vision platform purpose-built for bottles, closures, containers, and molded parts.

It delivers fast, accurate, and fully automated inspection — finding defects others miss. From leak testing to dimensional and surface checks, ProfileVision ensures 100% quality and less waste on every line.

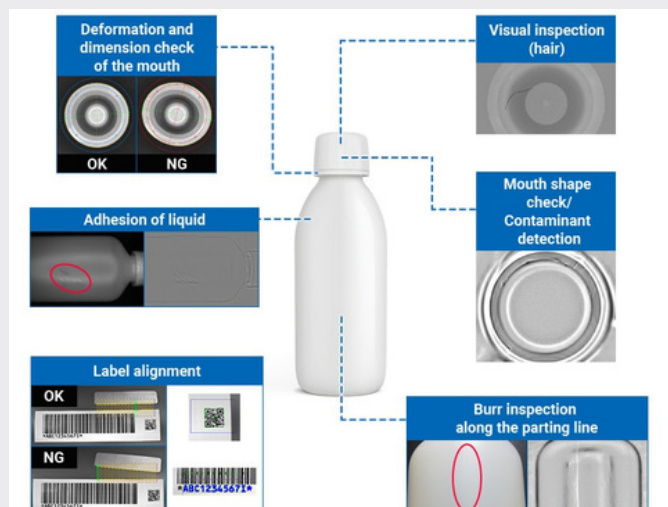
Smart. Reliable. Proven. Vision inspection built for plastics.

ProfileVision

Plastic Component Inspection

ProfileVision™ is purpose-built for high-speed inspection of plastic bottles, preforms, and closures, ensuring every part meets specification before it leaves the line.

Delivering repeatable, data-driven quality control, ProfileVision helps manufacturers reduce waste, avoid recalls, and maintain consistent product integrity.



- **Neck Defect Inspection & Measurement:** Detects ovality, thread damage, short shots, and flash with micron-level precision.
- **Black Spot Detection:** Identifies contamination, burn marks, or inclusions on transparent and opaque materials.
- **Excess Material Control:** Finds over-molding, burrs, and unwanted plastic buildup that can affect sealing or appearance.
- **Deformation Analysis:** Detects warping, dents, and collapse defects caused by uneven cooling or handling.