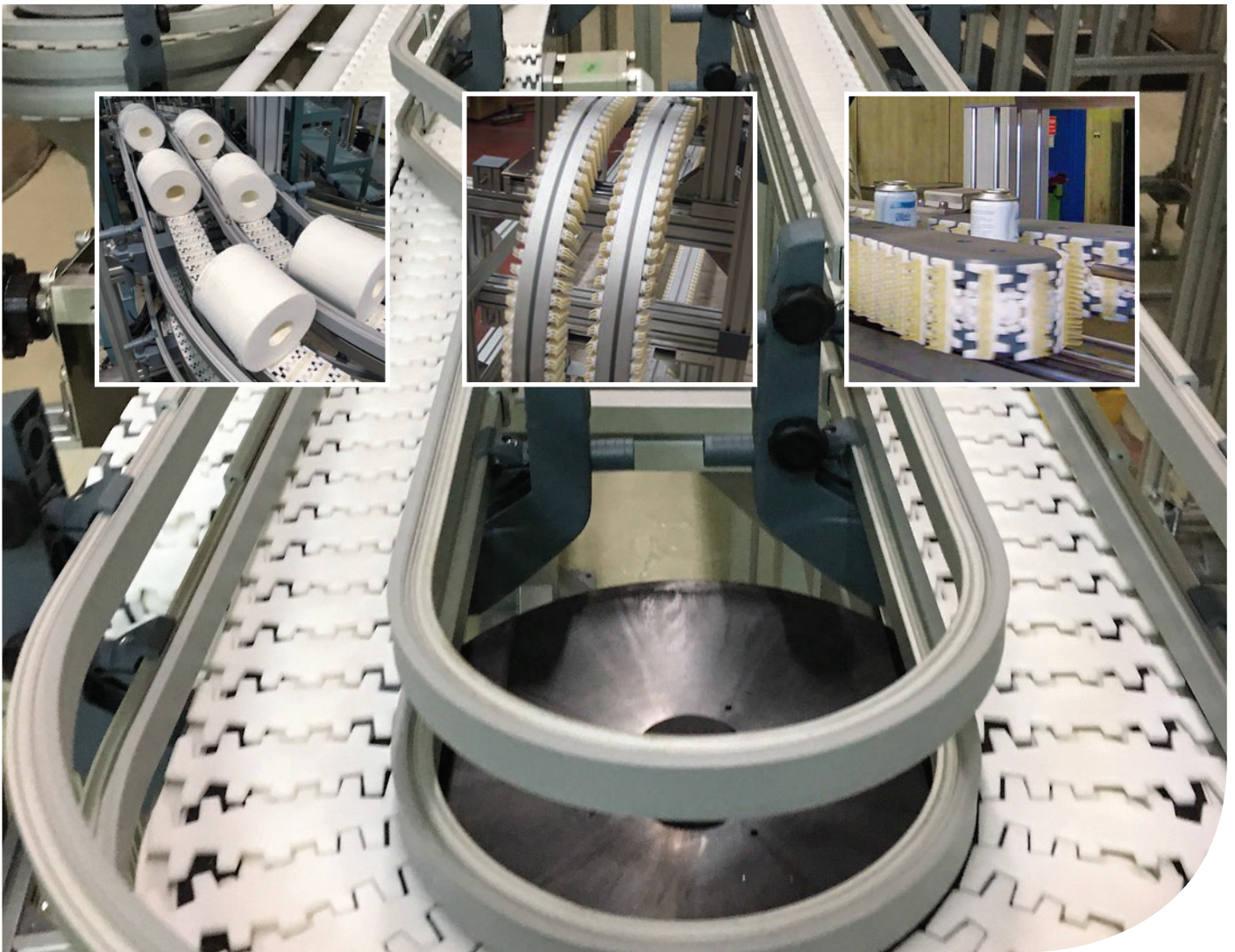


# ProfileSolutions USA Inc.

LEAK DETECTION + AUTOMATION TECHNOLOGY



## ProfileFlex Conveyors

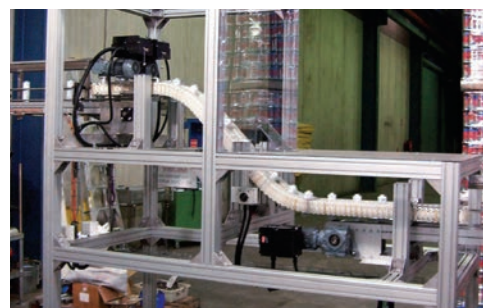
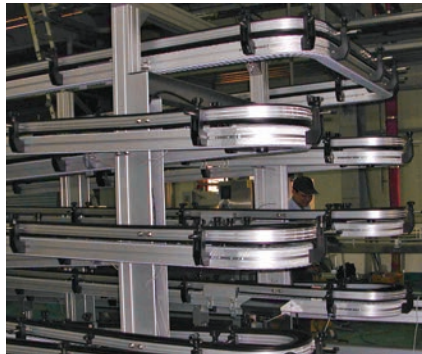
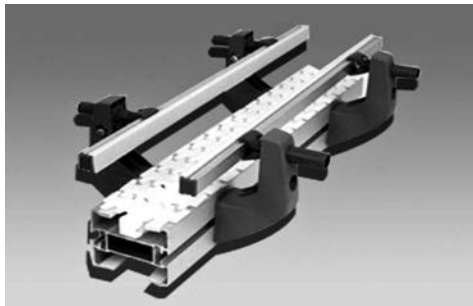
CONVEYOR SYSTEMS AND COMPONENTS

**CATALOGUE**

# ProfileFlex

## MODULAR CONVEYOR SYSTEMS

- ❑ High Quality modular conveyor system.
- ❑ Chain, profiles and accessories 100% interchangeable with 11 sizes of Flexlink.  
Mix and match compatible as its dimensionally the same.
- ❑ 25-35% **+ lower cost**. Ideal for spares, additions to existing systems, or complete systems.
- ❑ Available as parts or additions.
- ❑ High quality Dupont acetal resin used in the Chain.
- ❑ Thousands of Systems in use worldwide since 2002.
- ❑ **Sold in 25 countries.**
- ❑ Many thousands of systems worldwide, used by major multi-nationals in plastics, food, tissue, automotive and medical.



**CONVEYOR SYSTEMS**

**F45** Chain Width **43mm**  
 conveyor loading 30kg  
 conveyor length 6m  
 conveyor speed 20m/min

**FS** Chain Width **44mm**  
 conveyor loading 150kg  
 conveyor length 30m  
 conveyor speed 60m/min

**FL** Chain Width **63mm**  
 conveyor loading 150kg  
 conveyor length 40m  
 conveyor speed 60m/min

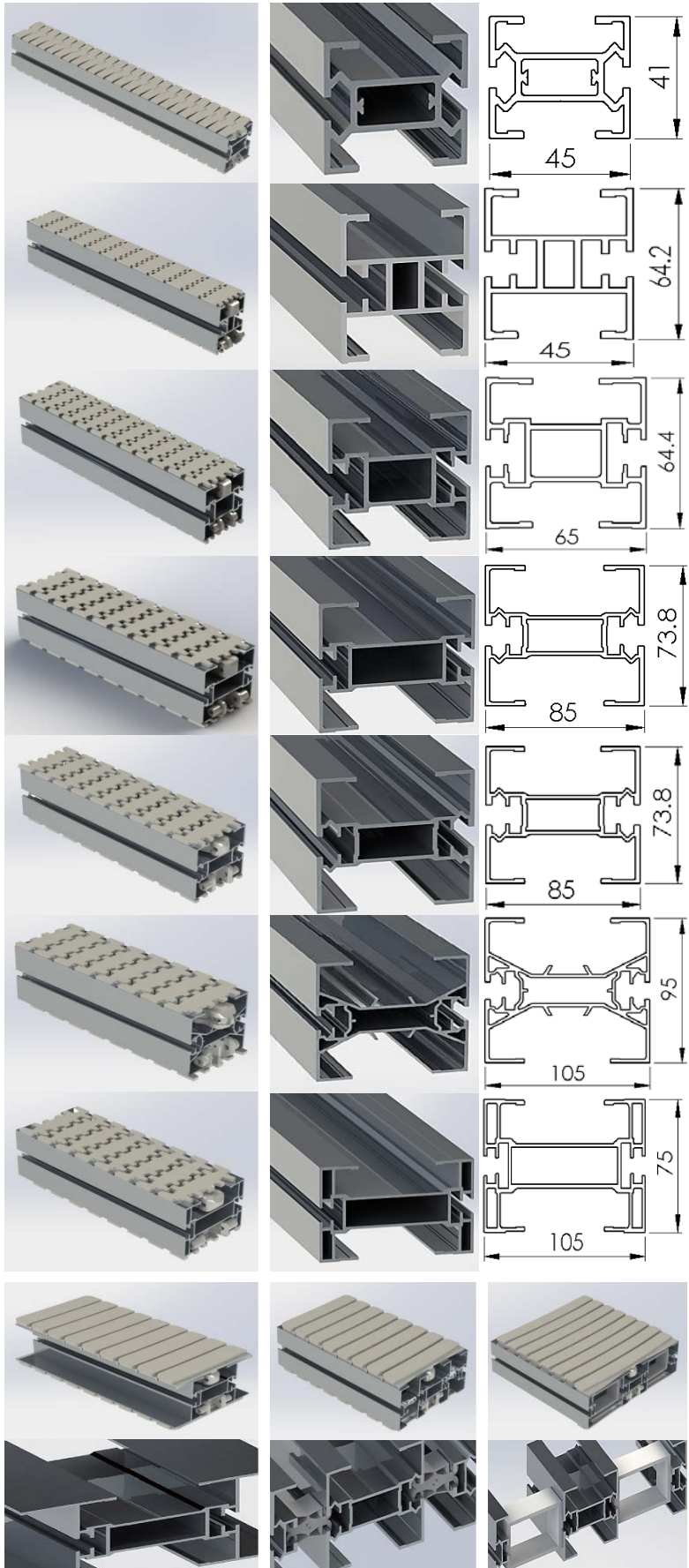
**FM** Chain Width **83mm**  
 conveyor loading 200kg  
 conveyor length 30m  
 conveyor speed 60m/min

**F65 & F85** Chain Width **63 & 83mm**  
 conveyor loading 200kg  
 conveyor length 30m  
 conveyor speed 60m/min

**FK** Chain Width **102mm**  
 conveyor loading 800kg  
 conveyor length 40m  
 conveyor speed 50m/min

**FH** Chain Width **103mm**  
 conveyor loading 300kg  
 conveyor length 30m  
 conveyor speed 60m/min

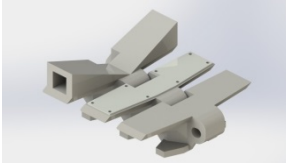
**FB** Chain Width **140/175/295mm**  
 conveyor loading 300kg  
 conveyor length 30m  
 conveyor speed 60m/min



**100% MIX & MATCH  
 COMPATIBLE WITH  
 FLEXLINK**

## CONVEYOR CHAIN

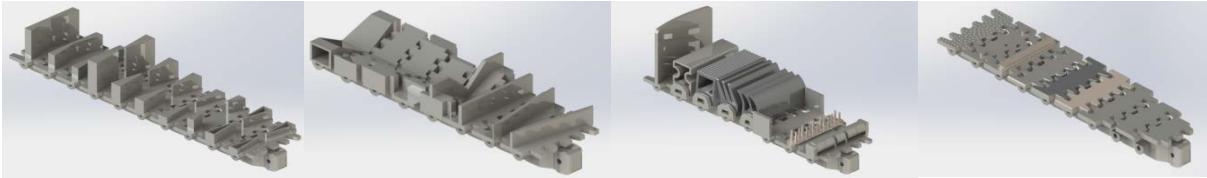
**F45** Chain Width 43mm



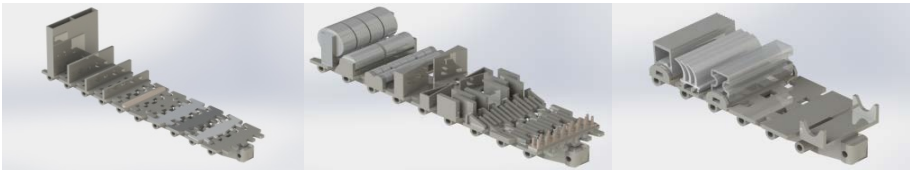
**FS** Chain Width 44mm



**FL** Chain Width 63mm



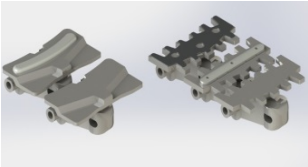
**FM** Chain Width 83mm



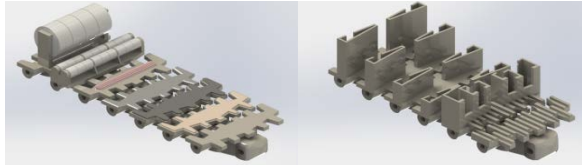
**FK** Chain Width 102mm



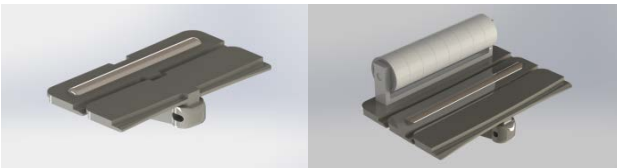
**F85** Chain Width 83mm



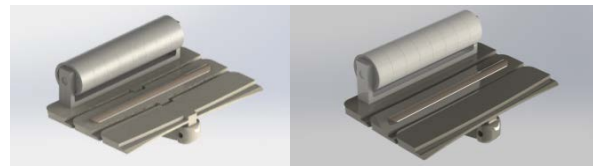
**FH** Chain Width 103mm



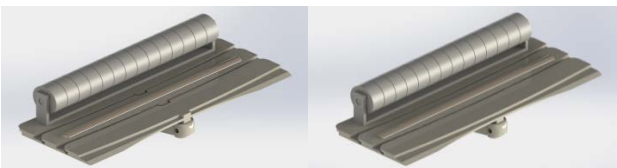
**FB140** Chain Width 140mm



**FB175** Chain Width 175mm



**FB295** Chain Width 295mm



**CIGARETTE** Chain Width 36, 43, 44, 51, 52, 63, 76mm



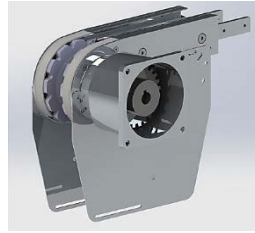
**SO MANY OPTIONS  
AVAILABLE FOR EVERY  
APPLICATION**

**DRIVE UNITS**

**End Drive Unit**



**Direct Drive**



**End Drive Unit**



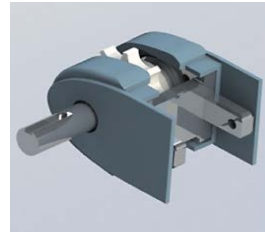
**Intermediate Drive Unit**



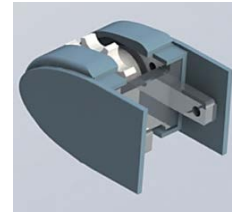
**Horizontal Drive Unit**



**F45 Drive Unit**



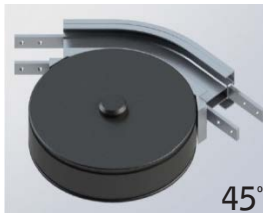
**IDLER END UNITS**



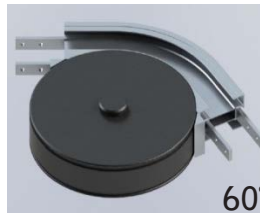
**HORIZONTAL WHEEL BENDS – R150/160/170/200**



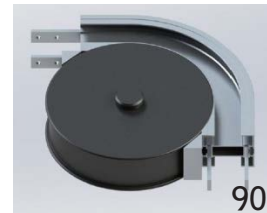
30°



45°



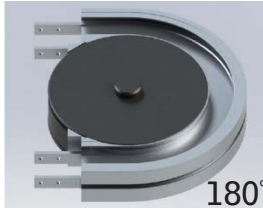
60°



90°



120°



180°



210°

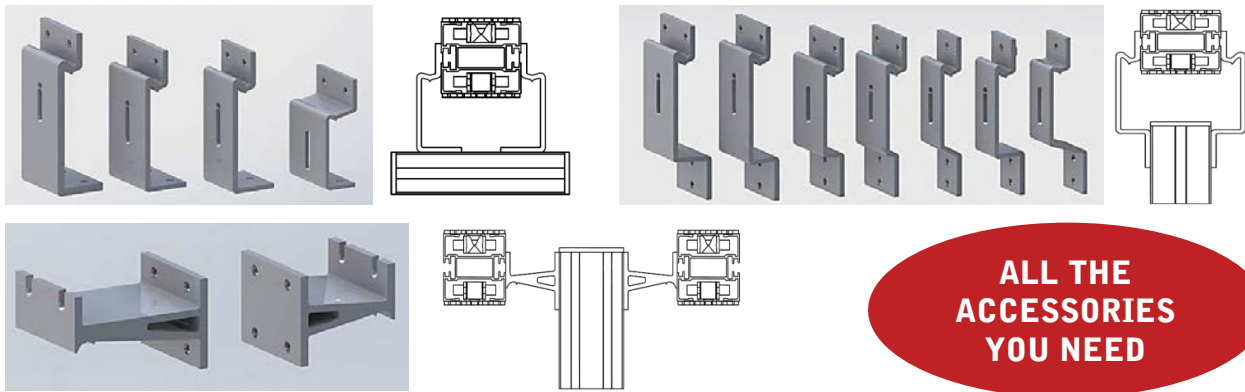
**HORIZONTAL PLAIN BEND**



**VERTICAL BEND**



## BEAM SUPPORT BRACKETS



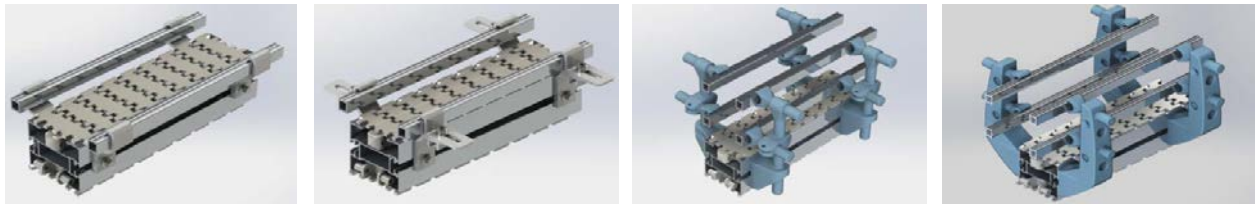
## DIP TRAYS



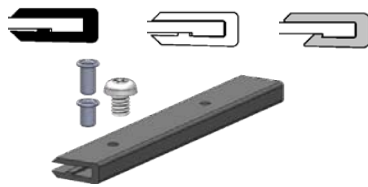
## GUIDE RAILS



## FIXED/ADJUSTABLE GUIDE RAIL BRACKETS, ALUMINIUM / POLYAMID



## SIDE RAIL



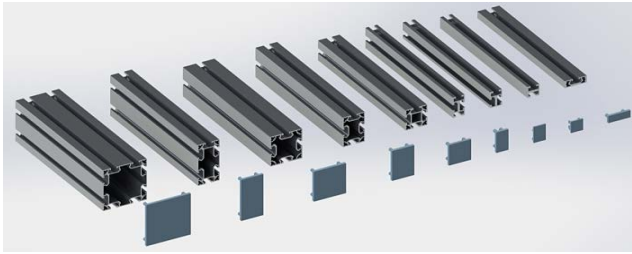
## COVER



## ANGLE BRACKETS, DIE-CAST 90



**SUPPORT BEAMS / END COVERS**



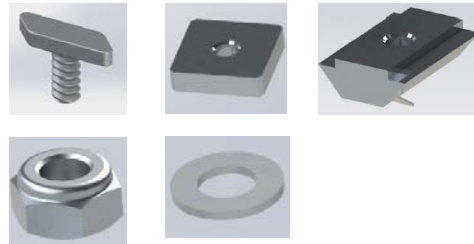
**POLYAMIDE FEET**



**ALUMINIUM FEET**



**FASTENERS**



**TOOLS**



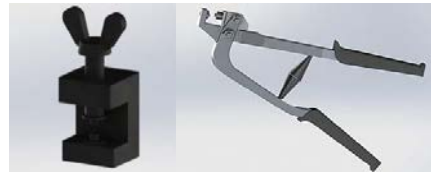
Drill Fixture



Mounting Tool

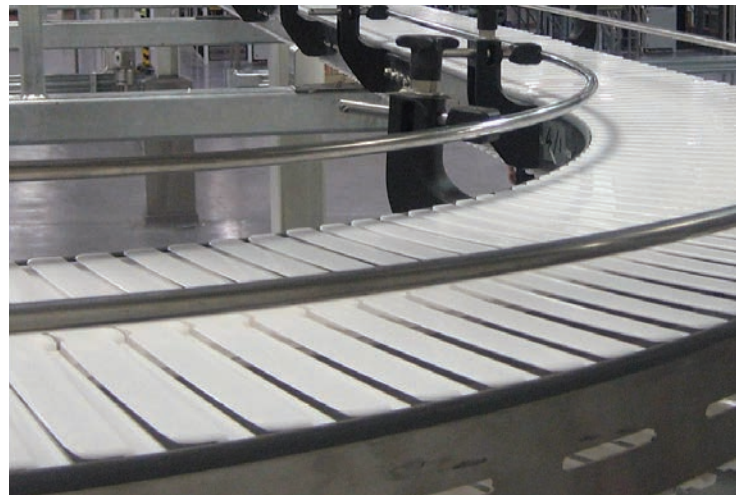
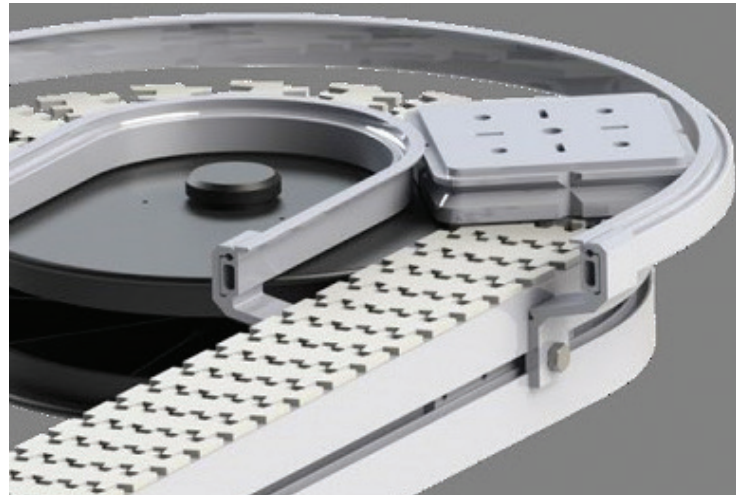


Pin Insertion Tool



Rivet Crimping Clamp





For more information Contact:

## ProfileSolutions USA Inc.

See us on youtube: PROFILE1963 • <https://www.youtube.com/user/PROFILE1963/videos>



Contact us for more information and a quote:

**Address:** 1005 N Commons Drive, Aurora IL 60504

**USA:** Ph: 1-877-PROLEAK (1-877-776-5325) • **USA:** FAX:1-877-PROFFAX (1-877-776-3329)

**Australia:** Intl Ph: +61 1300 554 599 • **Australia:** Intl Fax: +61 1300 554 588

**Email:** leak@profauto.com.au or usa@profauto.com.au • **Skype:** mitchind • **Website:** www.profileflex.com